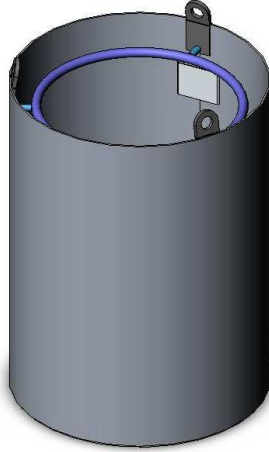


Type WP-C3 Crane Cage Work Platform

The type WP-C3 Crane Cage Work Platform has been designed strictly in accordance with Australian Standard AS 1418.17 and is suitable for a maximum of one person. Work performed in this Cage shall be limited to special tasks of short duration in situations where necessary to elevate personnel where it is not practicable to erect scaffolds or use a specially designed device. The standard finish on the Cage is painted enamel in 'Safety Yellow'.

*** All East West Engineering Crane Cages are supplied with a Load Test Certificate, Instructions for usage, Risk Control Measures and Workcover registration.



(Lifting Chains not shown)

SPECIFICATIONS:

- Suitable for 1 person
- Safe Working Load (SWL) 250kg
- Unit Weight 160kg
- Supplied with Lifting Chains

