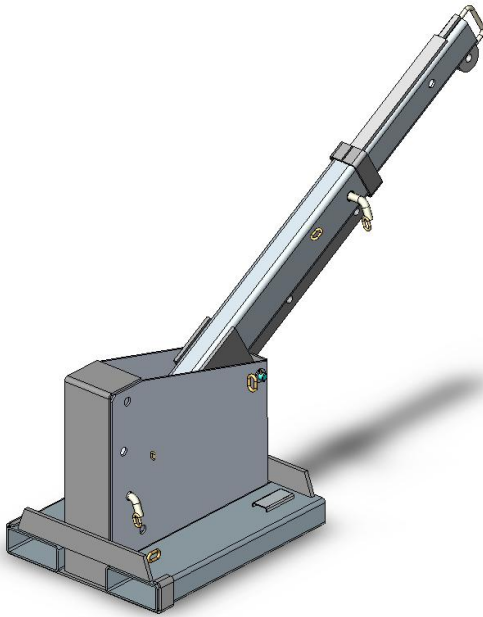


## Type TJS2.5 Tilt Jib (Short)

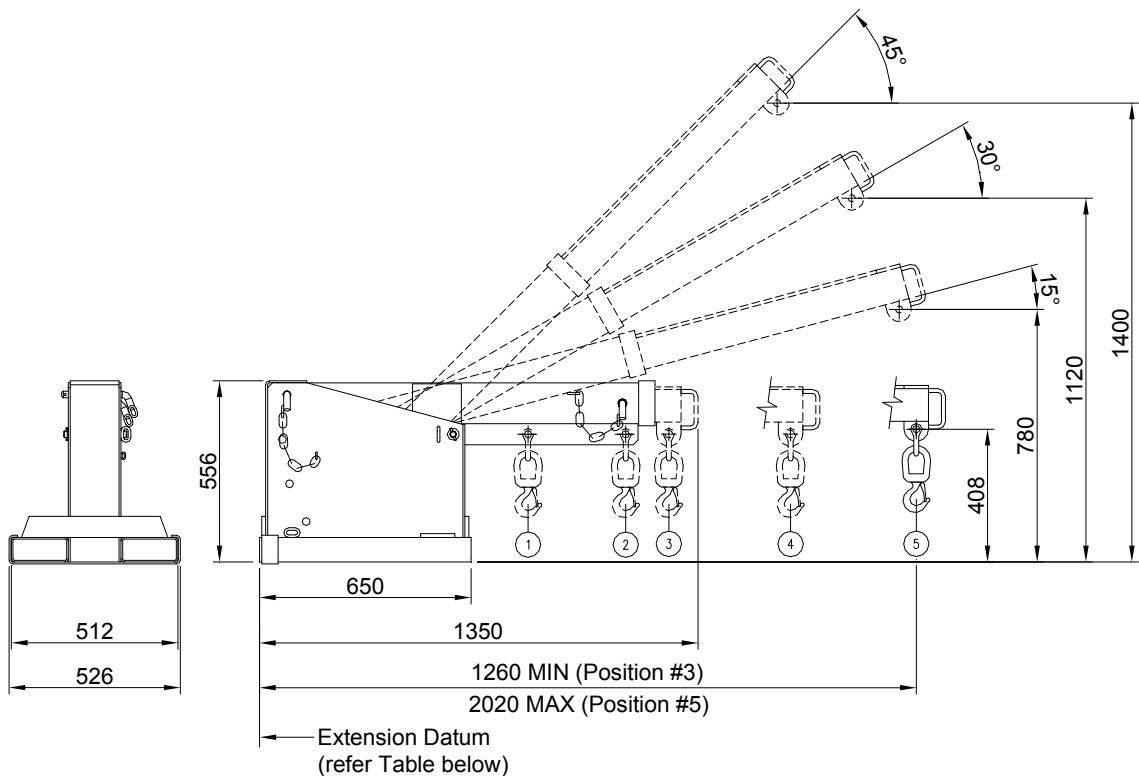


The type TJS2.5 Tilt Jib (Short) is designed with a tilt facility allowing extra height to compensate for the hook and sling length lost when lifting with a Jib attachment. A maximum height of 1.4 metres can be gained while the Jib can be fully extended to 2.02 metres. This slip-on attachment is held to the Forklift by a safety chain. The Jibs overall length when closed is 1.35 metres.

The standard finish on the type TJS2.5 Tilt Jib (Short) is Zinc Plated.

### SPECIFICATIONS:

- Safe Working Load (SWL) 2500kg Max.
- Unit Weight 130kg
- Load Centre 825mm
- Pocket Size 165 x 65
- Pocket Centres 337 mm
- Horizontal C of G 650mm
- Vertical C of G 300mm



SAFE WORKING LOADS (SWL) PER POSITION					
POSITION	1	2	3	4	5
EXTENSION (mm)	825	1125	1260	1640	2020
SWL (kg)	2500	1800	1200	900	750