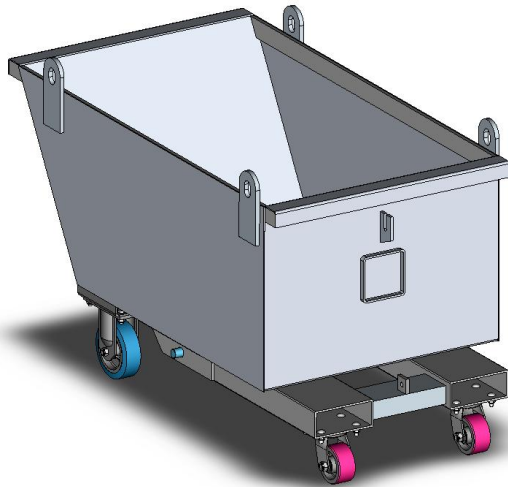


## Type SSD Compact Self Dumping Bin (Wheels & Crane Lug Options)



(Type SSD5 with optional Wheels & Crane Lugs shown)  
Refer 'SSD\_Sales' Product Specification sheet  
for the standard model configuration.

The type SSD Compact Self Dumping Bin has been designed with a low profile for confined spaces making it most suitable for the collection of slugs from punch machines. When transporting the bin to the discharge point, the Forklift tines are positioned fully under the bin utilising the Forklifts maximum lift capacity. To tip the bin, the Operator catches the bin on the edge of the bulk container and reverses the Forklift. When the tines clear the pivot point, raising the bin will permit a complete discharge of contents.

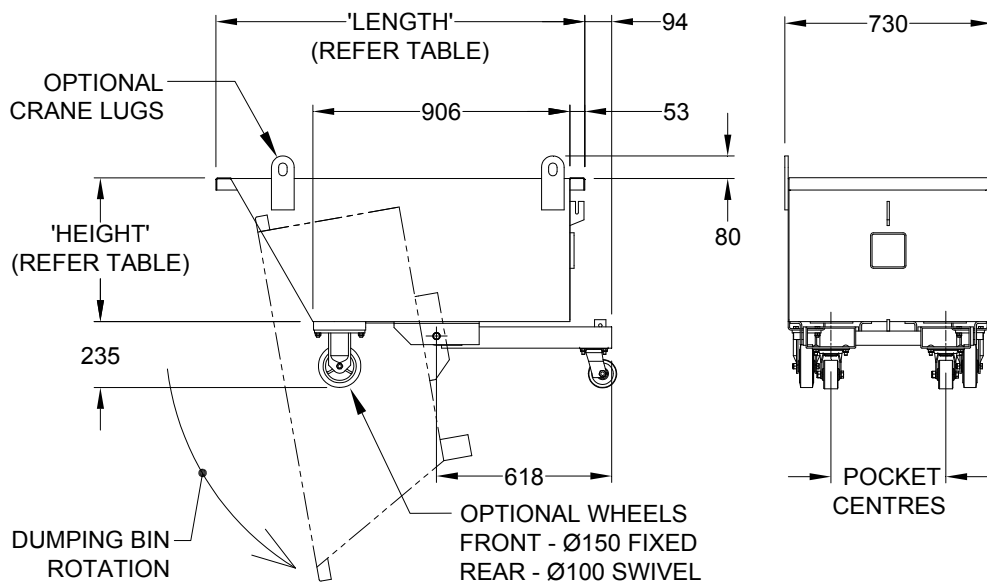
All type SSD bins have been manufactured with a heavy duty construction, have a Safe Working Load of 1000kg and range in sizes from 0.2 – 0.5 cubic metre capacities. These bins are available in either enamel painted over primed steel or H.D. Galvanised finish.

### SPECIFICATIONS:

- Pocket size 165 x 65mm
- Pocket Centres – 405mm
- Safe Working Load 1000kg
- Unit Weight – refer Table
- Volume Capacity – refer Table
- HCG & VCG – refer Table

### OPTIONS:

- Wheels, Crane Lugs, Lid
- Drain Valve & Strainer



BIN TYPE	CAPACITY	'HEIGHT'	'LENGTH'	*UNIT WEIGHT	H C of G	V C of G
SSD3	0.20 cu m	300mm	1185mm	96kg	600mm	100mm
SSD4	0.30 cu m	400mm	1245mm	106kg	620mm	150mm
SSD5	0.40 cu m	500mm	1300mm	116kg	640mm	200mm
SSD6	0.50 cu m	600mm	1360mm	126kg	700mm	250mm

\* NOTE: 'UNIT WEIGHT' includes weight of WHEELS.