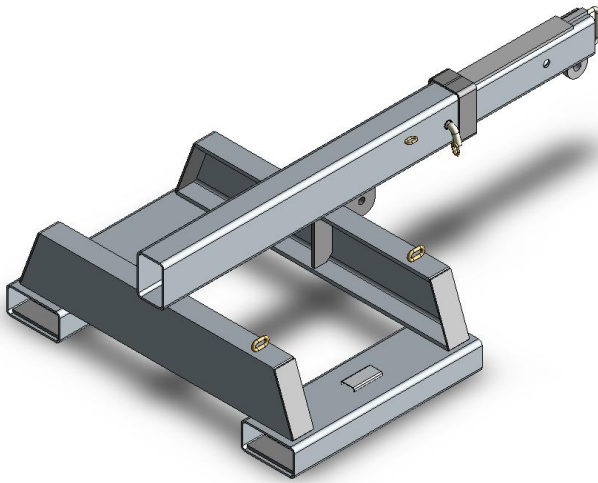


Type SFJS5 Fixed Jib (Short)

The type SFJS5 Fixed Jib (Short) is designed as an affordable general purpose Jib able to manoeuvre in confined spaces, with a 1.96 metre reach when fully extended. This Jib has been designed with wide pockets suitable for Forklifts with special hydraulic Tine Positioners. This slip-on Forklift attachment is held to the Forklift by a safety chain. The Jibs overall length when closed is 1.3 metres.



Supplied with safety swivel Hook and Shackle.

SPECIFICATIONS:

- Safe Working Load (SWL) 4750kg Max.
- Unit Weight 160kg
- Load Centre 780mm
- Pocket Size 185 x 75
- Pocket Centres 875 mm
- Horizontal C of G 650mm
- Vertical C of G 100mm
- Zinc Finish

