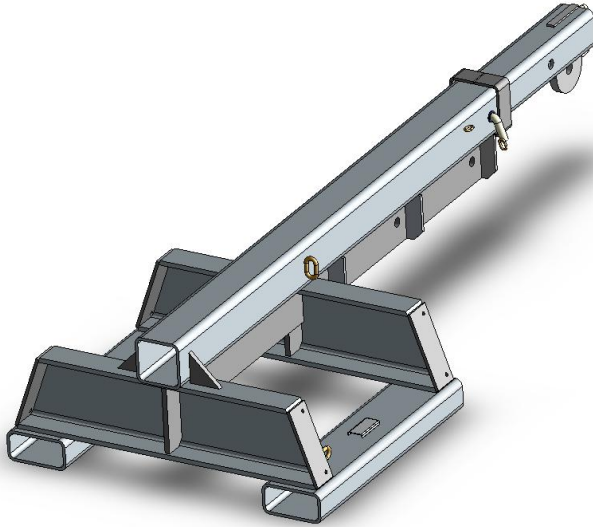


Type SFJL7.5 Fixed Jib (Long)

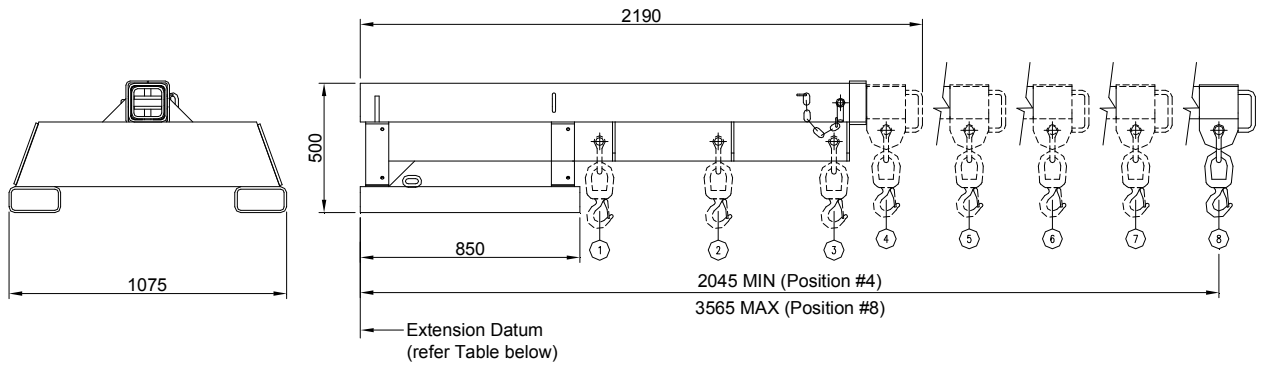
The type SFJL7.5 Fixed Jib (Long) is designed as an affordable general purpose Jib with a 3.56 metre reach when fully extended. This Jib has been designed with wide pockets suitable for Forklifts with special hydraulic Tine Positioners. This slip-on Forklift attachment is held to the Forklift by a safety chain. The Jibs overall length when closed is 2.19 metres.



Supplied with safety swivel Hook and Shackle.

SPECIFICATIONS:

- Safe Working Load (SWL) 7500kg Max.
- Unit Weight 450kg
- Load Centre 920mm
- Pocket Size 180 x 80
- Pocket Centres 875 mm
- Horizontal C of G 1200mm
- Vertical C of G 100mm
- Zinc Finish



SAFE WORKING LOADS (SWL) PER POSITION

| POSITION | 1 | 2 | 3 | 4 | 5 | 6 | 7 | 8 |
|----------------|------|------|------|------|------|------|------|------|
| EXTENSION (mm) | 920 | 1380 | 1805 | 2045 | 2425 | 2805 | 3185 | 3565 |
| SWL (kg) | 7500 | 6410 | 5700 | 4950 | 3750 | 1950 | 1140 | 720 |