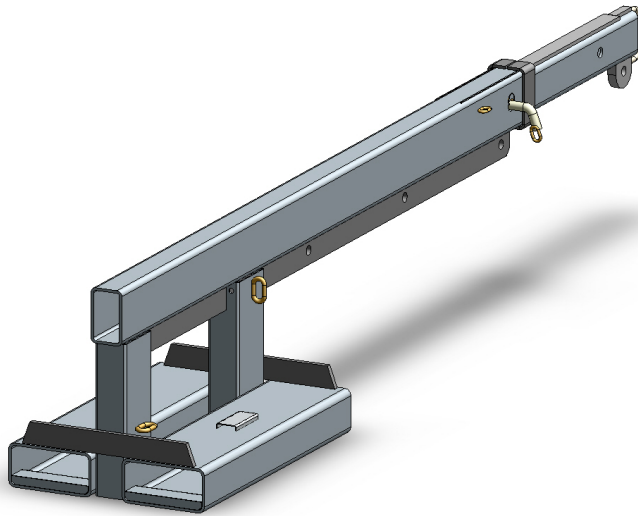


## Type FJL2.5 Fixed Jib (Long)



The type FJL2.5 Fixed Jib (Long) is designed as an affordable general purpose Jib with a 3.5 metre reach when fully extended. This slip-on Forklift attachment is held to the Forklift by a safety chain. The Jibs overall length when closed is 2.1 metres.

The standard finish on the type FJL2.5 Fixed Jib (Long) is Zinc Plated.

### SPECIFICATIONS:

- Safe Working Load (SWL) 2500kg Max.
- Unit Weight 135kg
- Load Centre 950mm
- Pocket Size 185 x 65
- Pocket Centres 275 mm
- Horizontal C of G 1160mm
- Vertical C of G 185mm

