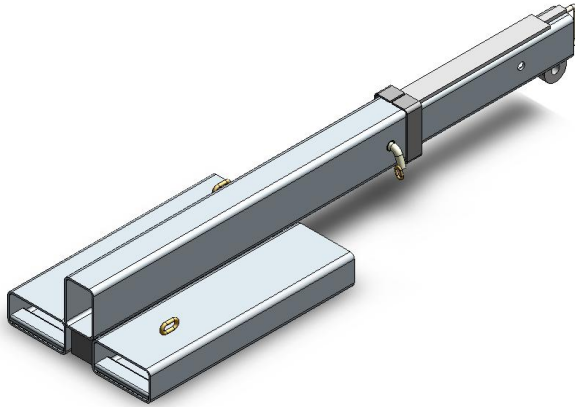


Type FJCS45 Fixed Jib (Short)

The type FJCS45 Fixed Jib (Short) is designed as an affordable general purpose Jib able to manoeuvre in confined spaces, with a 1.925 metre reach when fully extended. This slip-on Forklift attachment is held to the Forklift by a safety chain. The Jibs overall length when closed is 1.255 metres.

The standard finish on the type FJCS45 Fixed Jib (Short) is Zinc Plated.



SPECIFICATIONS:

- Safe Working Load (SWL) 4500kg Max.
- Unit Weight 95kg
- Load Centre 670mm
- Pocket Size 185 x 65
- Pocket Centres 290 mm
- Horizontal C of G 735mm
- Vertical C of G 120mm

