

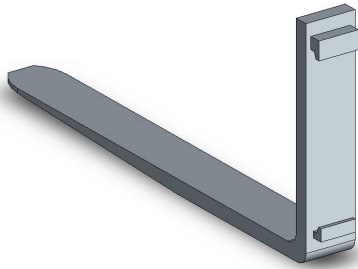
Type FA Fork Arms

Fork Arms (or forklift tines) supplied by East West Engineering have been designed in accordance with AS2359.1. Random testing has been carried out in accordance with AS2359.1 Clause 6.5.

Fork Arms are supplied in a range of capacities and lengths. Always ensure that the rating of the Fork Arm is equal to or exceeds the rated lift capacity of the fork truck. ***The fitting of Fork Arms with a lower rating than the forklift truck could lead to failure, resulting in injury or death.***

When ordering Fork Arms ensure correct parts are ordered (refer table below).

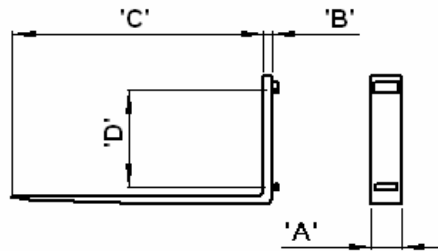
E.g. Type FA25-107 = Fork Arm 2.5 tonne SWL/ pair at 500mm load centre x 1070mm blade length.



Type	Class	Capacity at 500mm /pair kg	"A" mm	"B" mm	"C" mm	"D" mm	wt/pair kg
FA12-100	II	1200	80	35	1000	382	63
FA15-107	II	1500	100	32	1070	382	72
FA15-120	II	1500	100	32	1200	382	83
FA25-107	II	2500	125	35	1070	382	96
FA25-120	II	2500	125	35	1200	382	107
FA30-107	III	3000	125	39	1070	477	112
FA30-120	III	3000	125	39	1200	477	130
FA45-107	III	4500	125	50	1070	477	154
FA45-120	III	4500	125	50	1200	477	166

Fork Arms

- Tough CrMo high tensile steel
- Light weight, slow wearing
- Standard ITA carriage hooks
- Other sizes available



When fitting Fork Arms ensure that the marking on the Fork Arms is compatible with the forklift rating. Each Fork Arm is stamped on the side with the relevant information. The rating is for an individual Fork Arm and should be doubled to provide a total safe working load. Refer table above and descriptions below for all rating information for each type of Fork Arm available.

Fork Arm Type FA12-100 Class 2 mounting

Stamped on each Fork Arm – **600 x 500** representing 600kg at 500mm LC
 Combined capacity for the pair = 1200kg at 500mm load centre

Fork Arm Type FA15-107 / 120 Class 2 mounting

Stamped on each Fork Arm – **750 x 500** representing 750kg at 500mm LC
 Combined capacity for the pair = 1500kg at 500mm load centre

Fork Arm Type FA25-107 / 120 Class 2 mounting

Stamped on each Fork Arm – **1250 x 500** representing 1250kg at 500mm LC
 Combined capacity for the pair = 2500kg at 500mm load centre

Fork Arm Type FA30-107 / 120 Class 3 mounting

Stamped on each Fork Arm – **1500 x 500** representing 1500kg at 500mm LC
 Combined capacity for the pair = 3000kg at 500mm load centre

Fork Arm Type FA45-107 / 120 Class 3 mounting

Stamped on each Fork Arm – **2250 x 500** representing 2250kg at 500mm LC
 Combined capacity for the pair = 4500kg at 500mm load centre